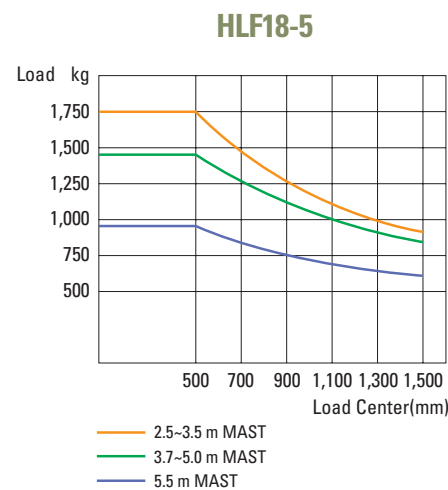
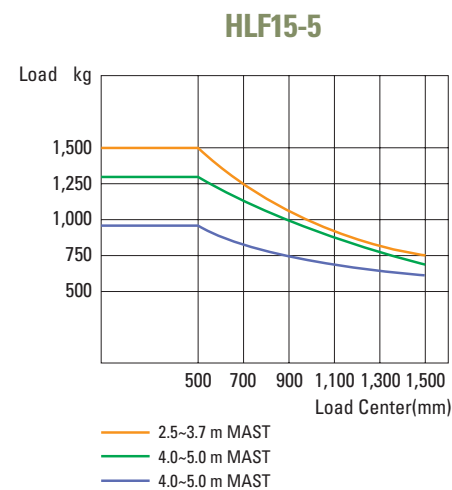


Mast Specification

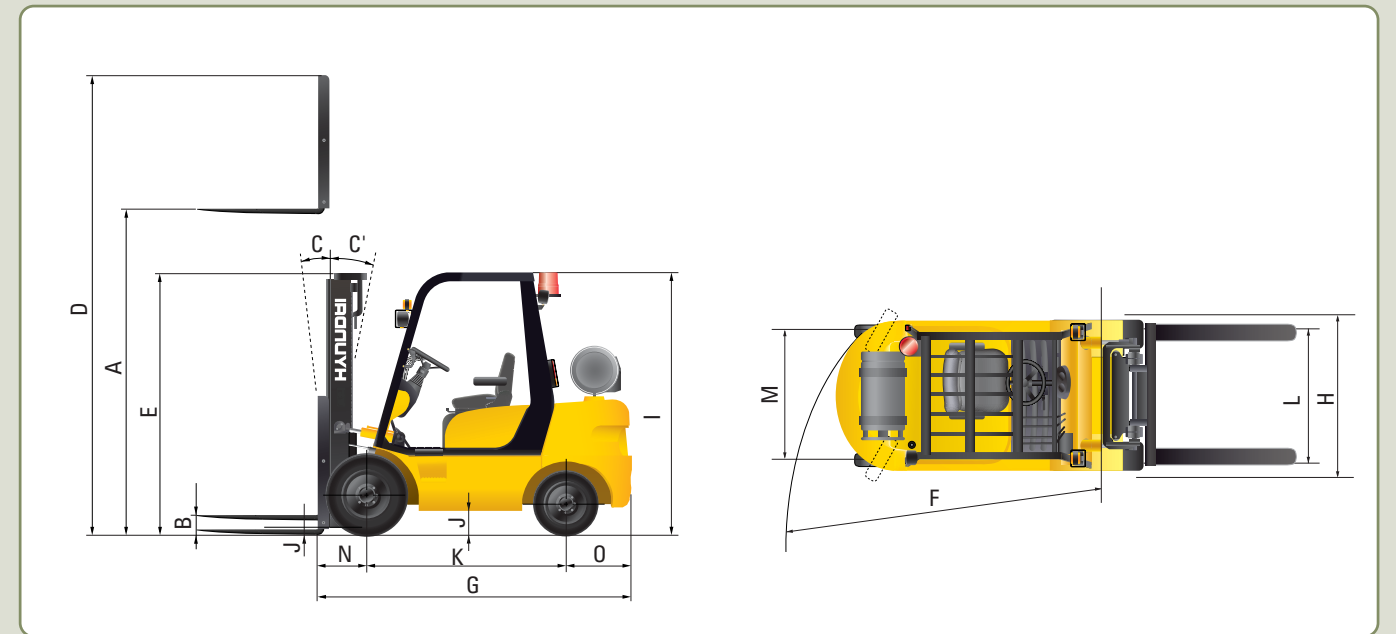
TYPE MAST	Maximum Fork Height	Overall Height(mm)			Free Lift(mm)		Tilt Angle		Load Capacity at 500 mm(24 in)LC		Truck weight unloaded	
		Lowered	Extended		W/o Load Backrest	W/Std Load Backrest	Fwd	Bwd	HLF15-5	HLF18-5	HLF15-5	HLF18-5
			W/o Load Backrest	W/Std Load Backrest								
v250	2500(98.4)	1755(69.1)	3031(119.3)	3532(139.0)	145(5.7)	145(5.7)	6	10	1500(3000)	1750(3500)	2715(5986)	2895(6383)
v270	2700(106.3)	1855(73.0)	3231(127.2)	3732(146.9)	145(5.7)	145(5.7)	6	10	1500(3000)	1750(3500)	2728(6015)	2908(6411)
V300	3000(118.1)	2005(78.9)	3531(139.0)	4032(158.7)	145(5.7)	145(5.7)	6	10	1500(3000)	1750(3500)	2748(6058)	2928(6455)
V330	3300(129.9)	2155(84.8)	3831(150.8)	4332(170.5)	145(5.7)	145(5.7)	6	10	1500(3000)	1750(3500)	2767(6101)	2947(6497)
V350	3500(137.8)	2255(88.7)	4031(158.7)	4532(178.4)	145(5.7)	145(5.7)	6	10	1500(3000)	1750(3500)	2780(6129)	2960(6526)
V370	3700(145.7)	2355(92.7)	4231(166.6)	4732(186.3)	145(5.7)	145(5.7)	6	10	1500(3000)	1700(3450)	2793(6158)	2973(6555)
V400	4000(157.4)	2505(98.6)	4531(178.4)	5032(198.1)	145(5.7)	145(5.7)	6	10	1450(2900)	1650(3400)	2819(6215)	2999(6612)
V450	4500(177.2)	2855(112.4)	5031(198.1)	5532(217.8)	145(5.7)	145(5.7)	6	6	1375(2800)	1575(3250)	2882(6354)	3062(6751)
V500	5000(196.9)	3105(122.2)	5531(217.7)	6032(237.5)	145(5.7)	145(5.7)	6	6	1300(2700)	1450(3100)	2915(6427)	3095(6824)
V550	5500(216.5)	3355(132.1)	6031(237.4)	6532(257.2)	145(5.7)	145(5.7)	6	6	925(2000)	950(2000)	2952(6509)	3132(6906)
TF370	3700(145.7)	1805(71.1)	4276(168.3)	4742(186.7)	1299(51.1)	798(31.4)	6	6	1450(3000)	1650(3300)	2864(6313)	3044(6710)
TF400	4000(157.4)	1905(75.0)	4576(180.1)	5042(198.5)	1399(55.1)	898(35.3)	6	6	1400(2850)	1600(3300)	2882(6353)	3062(6750)
TF430	4300(169.3)	2005(78.9)	4876(191.9)	5342(210.3)	1499(59.0)	998(39.3)	6	6	1350(2800)	1550(3200)	2900(6393)	3080(6790)
TF450	4500(177.2)	2105(82.8)	5076(199.8)	5542(218.2)	1599(62.9)	1098(43.2)	6	6	1325(2750)	1500(3150)	2918(6432)	3098(6829)
TF470	4700(185.0)	2155(84.8)	5276(207.7)	5742(226.0)	1649(64.9)	1148(45.2)	6	6	1300(2700)	1450(3050)	2928(6456)	3108(6853)
TF500	5000(196.9)	2255(88.7)	5576(219.5)	6042(237.9)	1749(68.8)	1248(49.1)	6	6	1250(2650)	1400(3000)	2947(6497)	3127(6894)
TF550	5500(216.5)	2455(96.6)	6076(239.2)	6542(257.5)	1949(76.7)	1448(57.0)	6	6	950(2000)	1100(2300)	2983(6576)	3163(6972)
TF600	6000(236.2)	2655(104.5)	6576(258.9)	7042(277.2)	2149(84.6)	1648(64.9)	6	6	725(1550)	750(1600)	3044(6710)	3224(7107)
TF650	6500(255.9)	2855(112.4)	7076(278.6)	7542(296.9)	2349(92.5)	1848(72.7)	3	3	450(950)	500(1050)	3085(6801)	3265(7198)
TF700	7000(275.6)	3055(120.3)	7576(298.2)	8042(316.6)	2549(100.3)	2048(80.6)	3	3	225(450)	250(500)	3120(6879)	3300(7276)

Load Capacity



■ 2-Stage limited free lift

Dimension



Specification

Description		Unit	HLF15-5	HLF18-5	
PERFORMANCE	Load Capacity	kg (lb)	1500(3000)	1,750(3,500)	
	Load Center	mm (in)	500(24)	500(24)	
	Fork	Lifting Speed	Load	mm/sec(fpm)	580(114.2)
			Unload	mm/sec(fpm)	700(137.8)
		Lowering Speed	Load	mm/sec(fpm)	500(98.4)
			Unload	mm/sec(fpm)	450(88.6)
	L x W x T		mm (in)	900x100x35(35.4x3.9x1.4)	900x100x35(35.4x3.9x1.4)
	Body	Travel Speed(Unloaded)	km/hr (mph)	20.6(12.8)	20.6(12.8)
		Gradeability	%(deg)	31(17.2)	27.7(15.5)
		90° Intersection	mm (in)	1,890(74.4)	1,920(75.6)
90° Staking		mm (in)	2,325(91.5)	2,355(92.7)	
Weight(Unloaded)		kg(lb)	2,767(6,100)	2,947(6,497)	
DIMENSION	A Max. Lifting Height	mm (in)	3,300(130)	3,300(130)	
	B Free Lifting Height	mm (in)	145(5.7)	145(5.7)	
	C Tilting (Forward)	deg	6	6	
	C' Tilting (Backward)	deg	10	10	
	D Max. Height	mm (in)	4,332(170.6)	4,332(170.6)	
	E Min. Height	mm (in)	2,155(84.8)	2,155(84.8)	
	F Outside Turning Radius Min.	mm (in)	1,940(76.4)	1,970(77.6)	
	G Overall Length to fork face	mm (in)	2,170(85.4)	2,200(86.6)	
	H Overall Width	mm (in)	1,090(42.9)	1,090(42.9)	
	I Overhead Guard Height	mm (in)	2,110(83)	2,110(83)	
	J Ground Clearance	At the lowest point	mm (in)	120(4.7)	120(4.7)
		Center of wheel base	mm (in)	145(5.7)	145(5.7)
	K Wheel Base	mm (in)	1,360(53.5)	1,360(53.5)	
	L Wheel Tread - Front	Single	mm (in)	912(35.9)	912(35.9)
	M Wheel Tread - Rear		mm (in)	912(35.9)	912(35.9)
	N Overhang-front		mm (in)	385(15.1)	385(15.1)
O Overhang-rear		mm (in)	423(16.6)	453(17.8)	
ENGINE	Model	-	MITSUBISHI 4G63-32HL	MITSUBISHI 4G63-32HL	
	Rated rpm	ps/rpm(kW/rpm)	39(28.7)/2,300	39(28.7)/2,300	
	Max. Engine Torque	kgf·m/rpm(lbf·ft/rpm)	13.7(99)/1,500	13.7(99)/1,500	
	Displacement	cc(cu-in)	1,997(122)	1,997(122)	
TIRE	Front - Drive	-	6.50-10-12PR	6.50-10-12PR	
	Rear - Load	-	5.00-8-8PR	5.00-8-8PR	